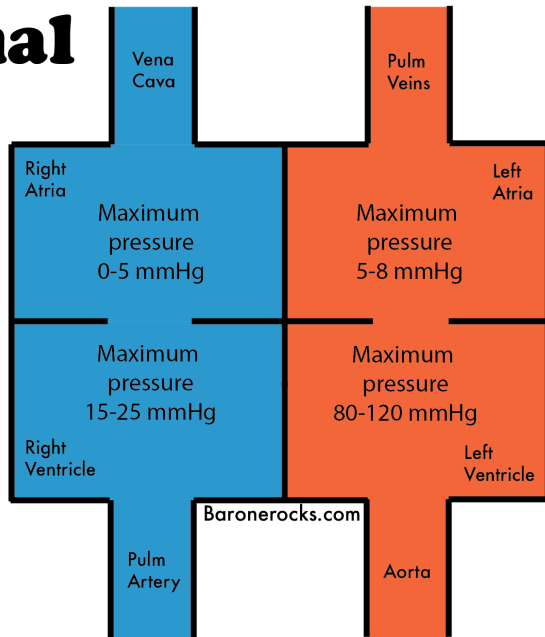


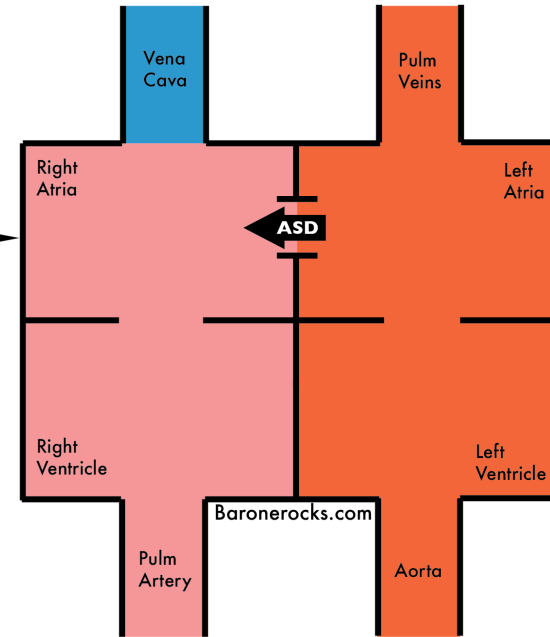
Normal

Saturated O ₂ Sat ~ 95%
Mixed O ₂ Sat ~ 75-95%
Desaturated O ₂ Sat ~ 75%



ASD

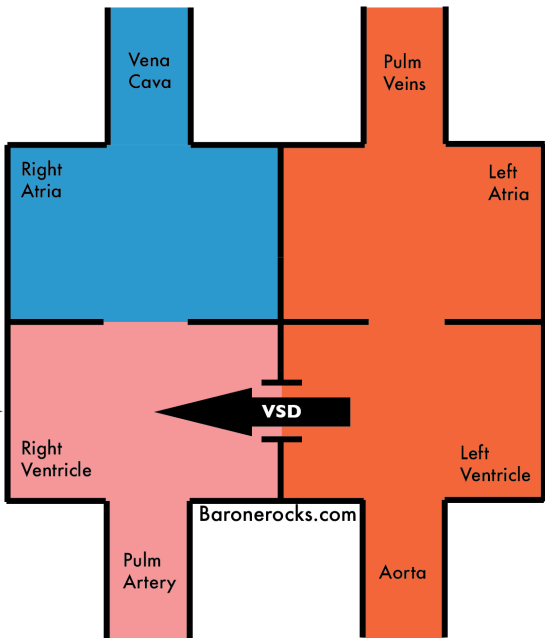
ASD - Oxygen "Step-Up" starts in the **R. Atria**



Clinical Key: The location of where the oxygen step-up starts will tell you which to pick!

VSD

VSD - Oxygen "Step-Up" starts in the **R. Ventricle**



PDA

PDA - Oxygen "Step-Up" starts in the **Pulm. Artery**

